

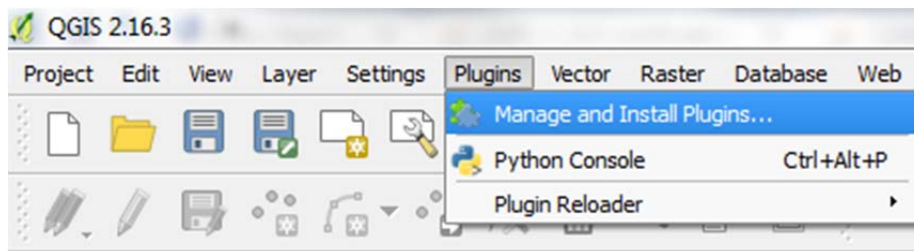
# QGIS Indiana Open Data Plugin

**Purpose:** to facilitate open data discovery and data download of geospatial data from the IndianaMap and the Indiana Spatial Data Portal (ISDP).

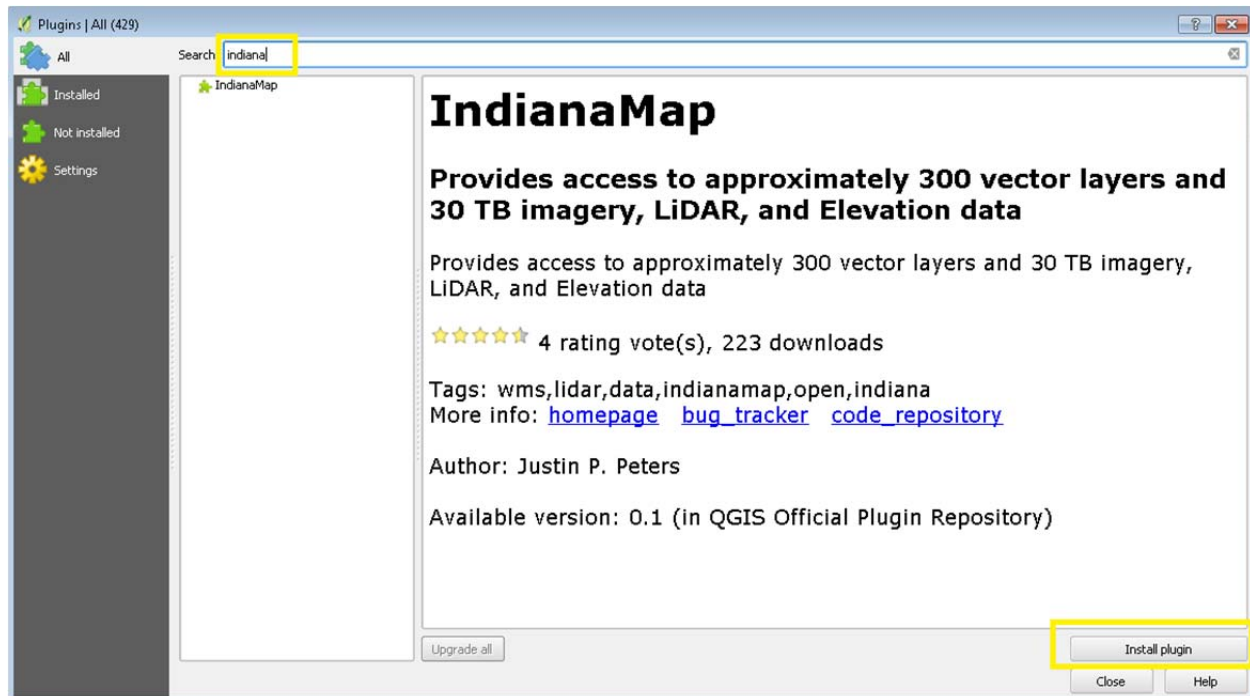
**Background:** The **IndianaMap** is a collection of authoritative geospatial data for the State of Indiana primarily including vector data. The services and data are hosted by the Indiana Geological Survey, a research Institute of Indiana University. <https://igs.indiana.edu>

The **Indiana Spatial Data Portal** is a collection of aerial photos, topographic maps, LiDAR, elevation data, and Sanborn historic maps for the State of Indiana. Indiana University's (IU) high performance networks and computing infrastructure support the ISDP which archives and provides web access to over 30 terabytes of Indiana geospatial data. <http://gis.iu.edu/>

**Installation:** From the Plugins menu-> Manage and Install Plugins



Type "Indiana" in the search box and click Install Plugin:

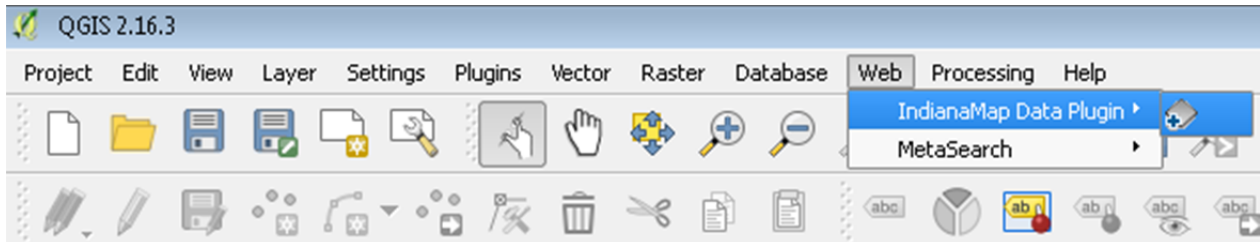


## Plugin Use:

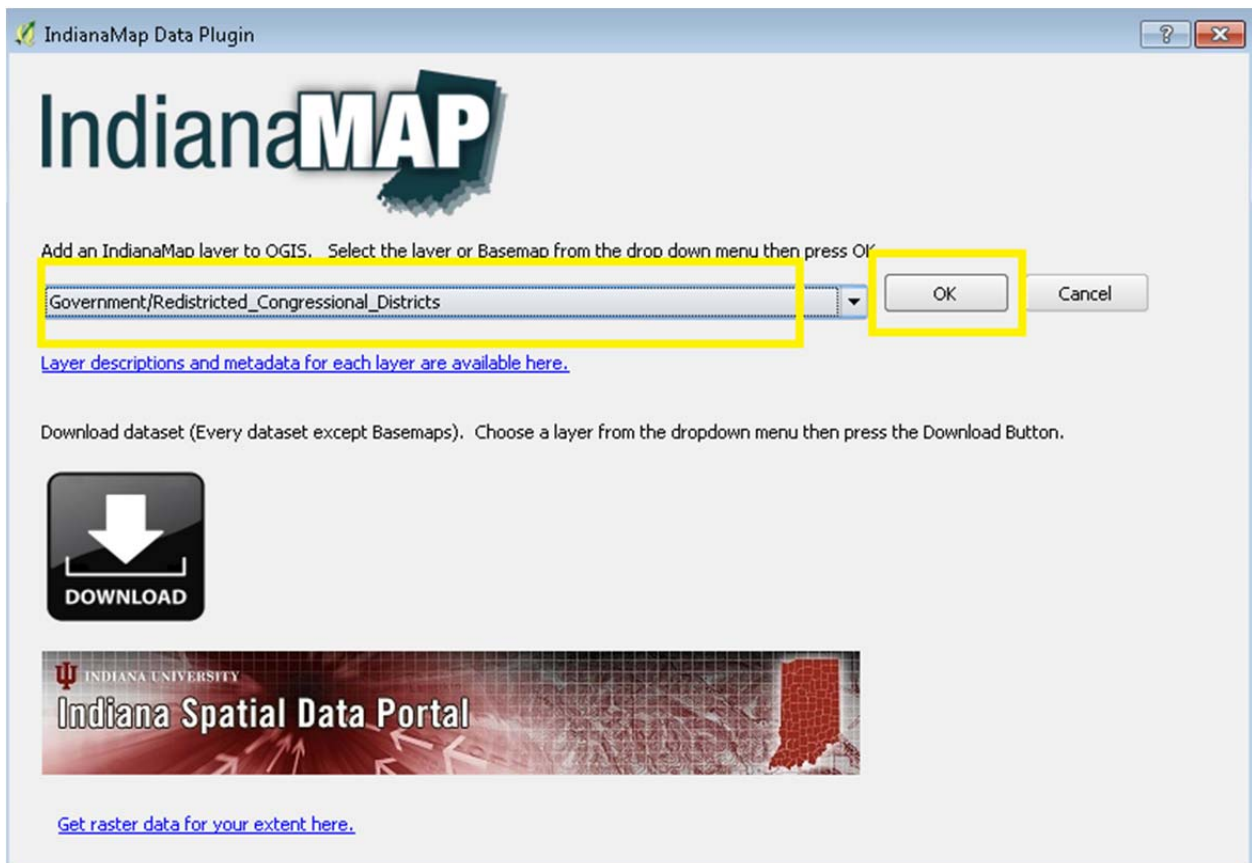
After installation you will have an “add content” Icon added to your QGIS menu bars:



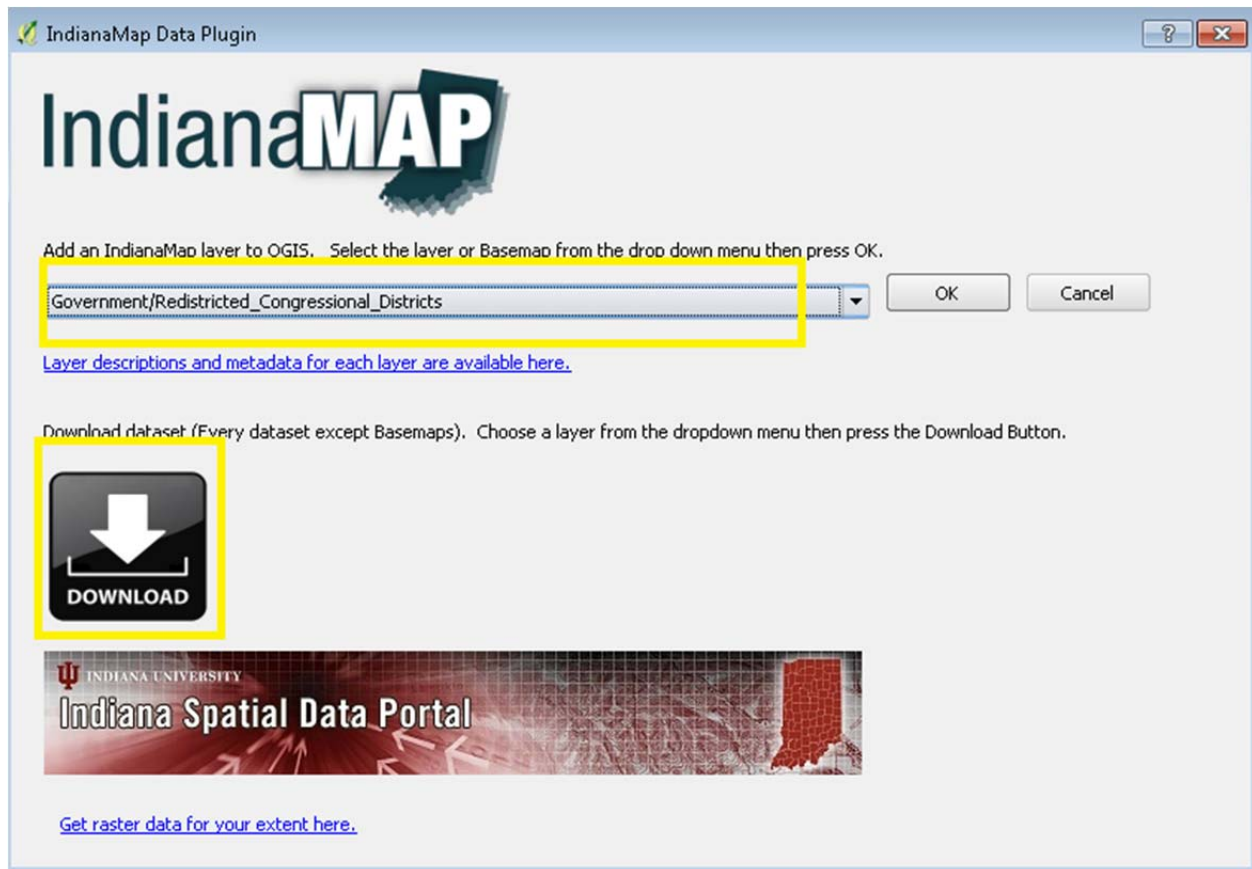
You can also access the plugin in the “Web” menu:



**To add a layer to QGIS:** Choose a layer from the dropdown menu then press OK:

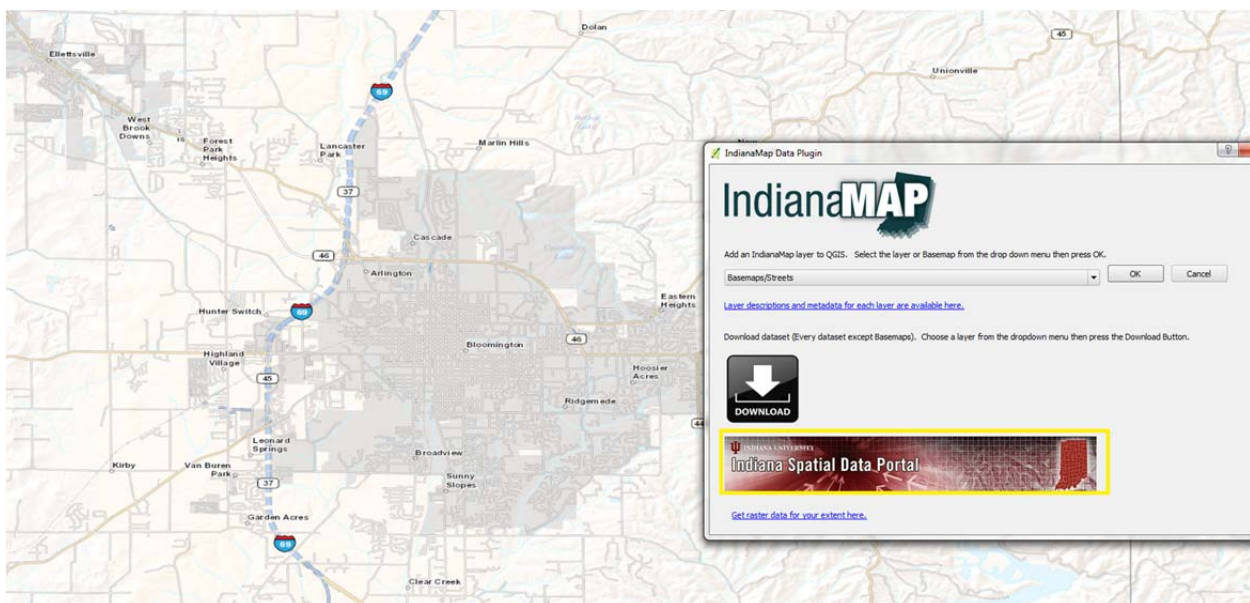


**To download a layer:** Choose a layer from the dropdown menu then click the “Download” image:



**To access files for download from the ISDP:**

1. Locate your area of interest within QGIS then click the “Indiana Spatial Data Portal” image:



A browser will open listing available data for download from the ISDP:

← → <https://gisdb.its.indiana.edu/ISDP/filelist.php?xmin=519553.1190336021827534&ymin=4322836.1982444897294044&xmax=561931.6818701677257195&ymin=4350012.6720146238803864>

Welcome Guest! You may download individual files as a guest. If you wish to use the multfile download tools please [login](#) or register [here](#)

**Spatial Datasets within the UTM bounding coordinates of:**  
**(519553.1190336021827534, 4322836.1982444897294044) min by (561931.6818701677257195, 4350012.6720146238803864) max in meters**  
**There are 36 available datasets.**

📁 Topographic Maps [description](#)

📁 1:24,000

📁 DRG\_GeoPDF

- 📄 [Allens\\_Creek\\_O39086A4\\_geo.pdf](#) DRG\_GeoPDF 8.67 MB na resolution utm\_nad27/83 meters
- 📄 [Belmont\\_O39086b3\\_geo.pdf](#) DRG\_GeoPDF 26 MB na resolution utm\_nad27/83 meters
- 📄 [Bloomington\\_O39086b5\\_geo.pdf](#) DRG\_GeoPDF 18.64 MB na resolution utm\_nad27/83 meters
- 📄 [Clear\\_Creek\\_O39086a5\\_geo.pdf](#) DRG\_GeoPDF 20.57 MB na resolution utm\_nad27/83 meters
- 📄 [Elkinsville\\_O39086A3\\_geo.pdf](#) DRG\_GeoPDF 8.64 MB na resolution utm\_nad27/83 meters
- 📄 [Freedom\\_O39086B7\\_geo.pdf](#) DRG\_GeoPDF 6.56 MB na resolution utm\_nad27/83 meters
- 📄 [Gosport\\_O39086c6\\_geo.pdf](#) DRG\_GeoPDF 17.28 MB na resolution utm\_nad27/83 meters
- 📄 [Hindustan\\_O39086c4\\_geo.pdf](#) DRG\_GeoPDF 22.54 MB na resolution utm\_nad27/83 meters
- 📄 [Modesto\\_O39086c5\\_geo.pdf](#) DRG\_GeoPDF 20.79 MB na resolution utm\_nad27/83 meters
- 📄 [Morgantown\\_O39086c3\\_geo.pdf](#) DRG\_GeoPDF 21.08 MB na resolution utm\_nad27/83 meters
- 📄 [Solsberry\\_O39086A7\\_geo.pdf](#) DRG\_GeoPDF 6.69 MB na resolution utm\_nad27/83 meters
- 📄 [Spencer\\_O39086C7\\_geo.pdf](#) DRG\_GeoPDF 6.87 MB na resolution utm\_nad27/83 meters
- 📄 [Stanford\\_O39086A6\\_geo.pdf](#) DRG\_GeoPDF 6.81 MB na resolution utm\_nad27/83 meters
- 📄 [Unionville\\_O39086b4\\_geo.pdf](#) DRG\_GeoPDF 25.67 MB na resolution utm\_nad27/83 meters
- 📄 [Whitehall\\_O39086b6\\_geo.pdf](#) DRG\_GeoPDF 20.46 MB na resolution utm\_nad27/83 meters

+ 📁 DRG\_GeoTiff

+ 📁 DRG\_Tiff\_border

+ 📁 UStopo\_GeoPDF

+ 📁 1:100,000

+ 📁 1:250,000

+ 📁 Historic Quadrangles

+ 📁 2014 NAIP Imagery [description](#)

+ 📁 2014 Monroe County Aerial Photography [description](#)

Submit

📄 Home | University Information Technology Services | October 11, 2016  
Copyright 2005-2016, The Trustees of Indiana University | Copyright Complaints

Please submit any bugs or issues to the issue tracker at the github repo.

**Author:** [Justin P. Peters](#)

**Author's email:** [jppeters@iu.edu](mailto:jppeters@iu.edu)

**Maintainer:** [jpp](#)

**Tags:** [wms](#) , [lidar](#) , [data](#) , [indianamap](#) , [open](#) , [indiana](#)

**Plugin home page:** <https://github.com/gisjustin/IndianaMapQGIS>

**Tracker:** [Browse and report bugs](#)

**Code repository:** <https://github.com/gisjustin/IndianaMapQGIS>

**Latest stable version:** [0.1](#)